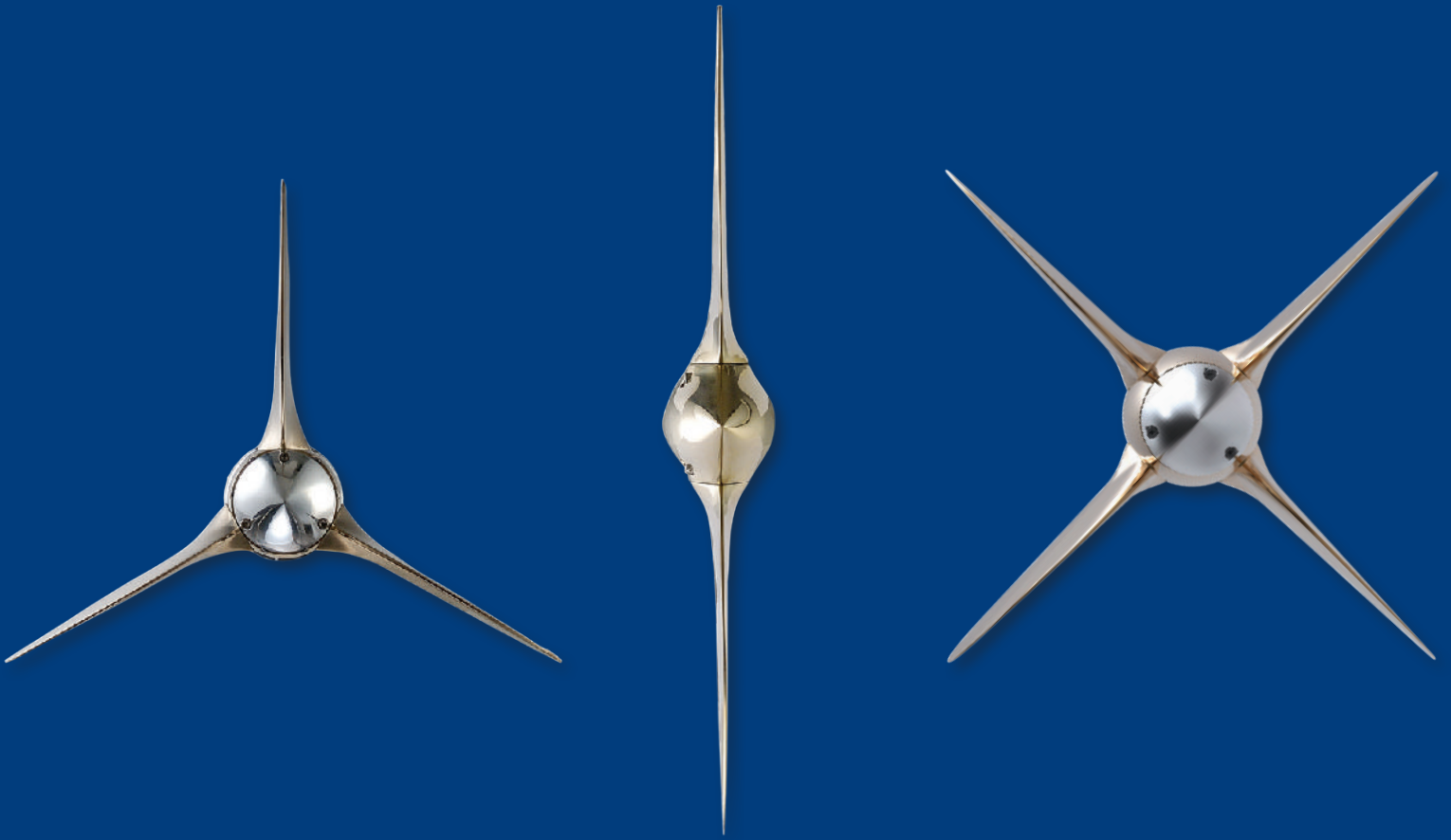


MAX PROP

AUTOMATIC FEATHERING PROPELLERS



MAXIMIZING YOUR PERFORMANCE AT SEA

AUTOMATIC FEATHERING PROPELLERS

Max Prop® is the leading low drag propeller on the market today. Since starting production in the early 70's Max Prop® has proven itself on racing and cruising boats around the world. With over 50.000 propellers in the water, the Max Prop® is tested daily in the harshest conditions and has established itself as the most efficient and reliable low drag propeller. The combination of low drag, outstanding reverse power, efficient forward performance and fail safe design makes

Max Prop® the ideal sailboat propeller on the market today. Every Max Prop® propeller is the result of important and revolutionary studies, as demonstrated by an extraordinary quantity of worldwide patents, from Europe to the United States passing through China. This attention to innovation is rewarded by various institutions which have repeatedly awarded Max Prop® for its patents.



“ **The boat we sailed was equipped with a feathering Max Prop®, which is probably the single best investment that any cruising sailor could make to improve performance under both sail and power. Max Props® aren't cheap, but they're worth every penny if you're concerned about performance..**

Practical Sail Magazine





RELIABILITY

Max Prop® uses a “differential” type of design so all blades open in unison in forward or reverse. The extraordinary reliability of Max Prop® has made it an overwhelming choice for long range cruisers.



GREAT REVERSE WITH SEPARATE ADJUSTABLE PITCH

The Max Prop® provides 80% greater reverse power than a comparable fixed blade propeller. In addition, in most models, the reverse pitch is adjustable independently from the forward one.



FINEST ADJUSTABILITY PRECISION

The pitch is adjustable on all Max Prop®. This allows you to optimize the propeller pitch to the engine to achieve maximum efficiency.



LOW DRAG & COMPACT VOLUME

Under sail the Max Prop® will increase sailing speed by about 15%, the largest difference being noticed when sailing in light air. The benefits of the feathering position are enhanced by the minimal amount of space taken by the prop.



MATERIALS

Every Max Prop® is made with the best special marine bronze with high resistance to marine corrosion, good strength along with good toughness (resistance to impacts).



100% MADE IN ITALY

While contemporary industrial society is leaning more and more on emerging markets not regulated, we are proud of being 100% made in Italy.

PROPELLER MODELS

2 BLADE CLASSIC MODEL

- Streamlined original design
- 40 years of proven performance and reliability
- Lowest sailing drag
- Outstanding reverse power and manoeuvrability
- Variable pitch
- 2 Blade is ideal for racing boats

3 & 4 BLADE EASY MODEL

- New design
- Extremely low sailing drag
- Great forward power in all conditions
- Same outstanding reverse as the Classic Max Prop® model since early '70s
- Easy and immediate installation: prop is shipped fully assembled with only the nut to be tightened
- Ideal for local and long range cruise
- Externally adjustable pitch (no need for a haul out)
- Forward and backward pitch can be regulated separately
- Fast external regulation of the pitch

5 BLADE WHISPER MODEL

- The one and the only 5 bladed feathering propeller on the market
- Ideal for heavy displacement cruiser wanting extra power and smoothness of a 5 blade
- Outstanding reverse
- Ultra smooth operation
- Very silent thanks to the 5 blades
- Low drag (the feathering allows to increase the number of blades without influencing the drag)
- Amazing b.a.r. (blade area ratio) when engaged
- Easy and immediate installation: prop is shipped fully assembled with only the nut to be tightened
- Externally adjustable pitch (no need for a haul out)
- Forward and backward pitch can be regulated separately
- Fast external regulation of the pitch

2 BLADE CLASSIC MODEL

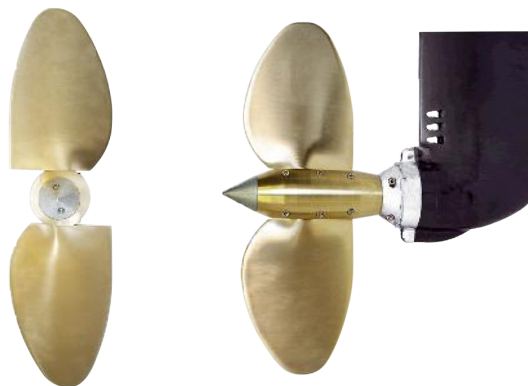


The original Max Prop® was designed in the early 70's for the high tech race boat market. Since proving itself in the racing arena, the Classic Max Prop® has earned its way into the mainstream market as the leader in low drag propellers. With its still unsurpassed performance in both forward and reverse, the Classic Max Prop® has become a legend among the sailing community.

The new model design offers a further hydrodynamic profile in the feathering position and it has furthermore a reduced weight and encumbrance, maintaining the same high resistance. In contrast to other type of propellers, the Max Prop® does not open the blades for centrifugal force, therefore these is no need of strong accelerations and/or sharp shocks.

FEATURES

- EFFICIENT POWER
- OUTSTANDING REVERSE
- REDUCE VIBRATIONS
- UNEQUALLED RELIABILITY
- VERY LOW DRAG
- VARIABLE PITCH





3 & 4 BLADE EASY MODEL



The Max Prop® Easy is a true step forward in Max Prop® design. The easy installation and simple pitch adjustment make this model a great choice for a wide range of boats. The three or four blade design provides smooth and efficient power.

Models are shipped fully assembled, making installation similar to a fixed propeller, basically slide it onto the shaft, nut it in place and the propeller is ready to go.

As with all Max Prop®s the Easy has a variable pitch. The pitch is adjustable in small increments, providing the ability to fine tune easily the loading of the engine with precision. Moreover, pitch adjustment can be done rapidly also in the water as the propeller does not need to be disassembled to change the pitch.

FEATURES

- EFFICIENT POWER
- OUTSTANDING REVERSE
- SMOOTH OPERATION
- VERY LOW DRAG
- VERY EASY INSTALLATION
- MICROMETRIC ADJUSTABLE PITCH





5 BLADE WHISPER MODEL



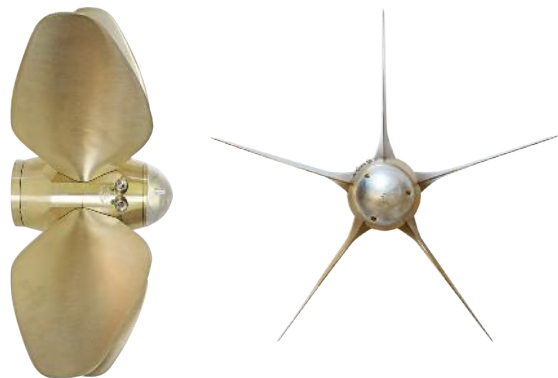
The Max Prop® Whisper uses five blades to provide quiet operation and impressive thrust. Especially against heavy wind and seas, the fifth blade will maintain boat speed on a heavy vessel. Also, the fifth blade provides a smoother operation quieting down propeller noise on larger applications. The Whisper is based on the Easy design, so it's shipped fully assembled, making installation and pitch changes simple and fast.

The pitch is adjustable in small increments, providing the ability to fine tune easily the loading of the engine with precision. Moreover, pitch adjustment can be done rapidly also in the water as the propeller does not need to be disassembled to change the pitch.

The Whisper is designed for larger moderate to heavy displacement vessels which can benefit from the extra thrust and quiet performance of a five blade propeller. Thanks to its 80% b.a.r., it's suitable also in applications where the propulsion system has very reduced space.

FEATURES

- EFFICIENT POWER
- OUTSTANDING REVERSE
- ULTRA SMOOTH OPERATION
- LOW DRAG
- EASY INSTALLATION
- MICROMETRIC ADJUSTABLE PITCH





MAX PROP®

via Bernardino Galliani, 1
20156 Milano
ITALY

www.maxprop.it

✉ info@maxprop.it

📄 maxprop1

☎ +39 02 33 404 325

Vertretung Österreich:

Kirschbaum GmbH
An der Ostbahn 46
1100 Wien/ Austria

www.kirschbaum.at

www.propellershop.at

info@propellershop.at

Tel: +43 (0)1 6882379



Follow us on:

